

- LEGEND**
- ▣ PROPOSED DRAIN INLET
 - ▣ PROPOSED AREA DRAIN
 - PROPOSED STORM DRAIN CLEANOUT
 - ▣ PROPOSED ELECTRICAL VAULT
 - PROPOSED STORM DRAIN LINE
 - - - PROPOSED PERFORATED STORM DRAIN LINE
 - - - PROPOSED LOW VOLTAGE CONDUIT LINE



SIEGFRIED
 900 Howe Ave, Suite 200
 Sacramento, CA 95825
 916-450-2777
 www.siegfriedeng.com

- CIVIL
- STRUCTURAL
- LANDSCAPE ARCHITECTURE
- SURVEYING



REVISIONS

No.	Date	Description
1	04/20/21	PLANNING DEPARTMENT SIG #2



PROJECT
 KAISER
 PERMANENTE
 ROSEVILLE
 TEMPORARY
 PARKING LOT
 2180 DOUGLAS BLVD.
 ROSEVILLE, CA 95661

CW#1 TBD
 BO# TBD
 EN# TBD

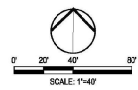


DATE SIGNED: 06/08/21

SHEET TITLE

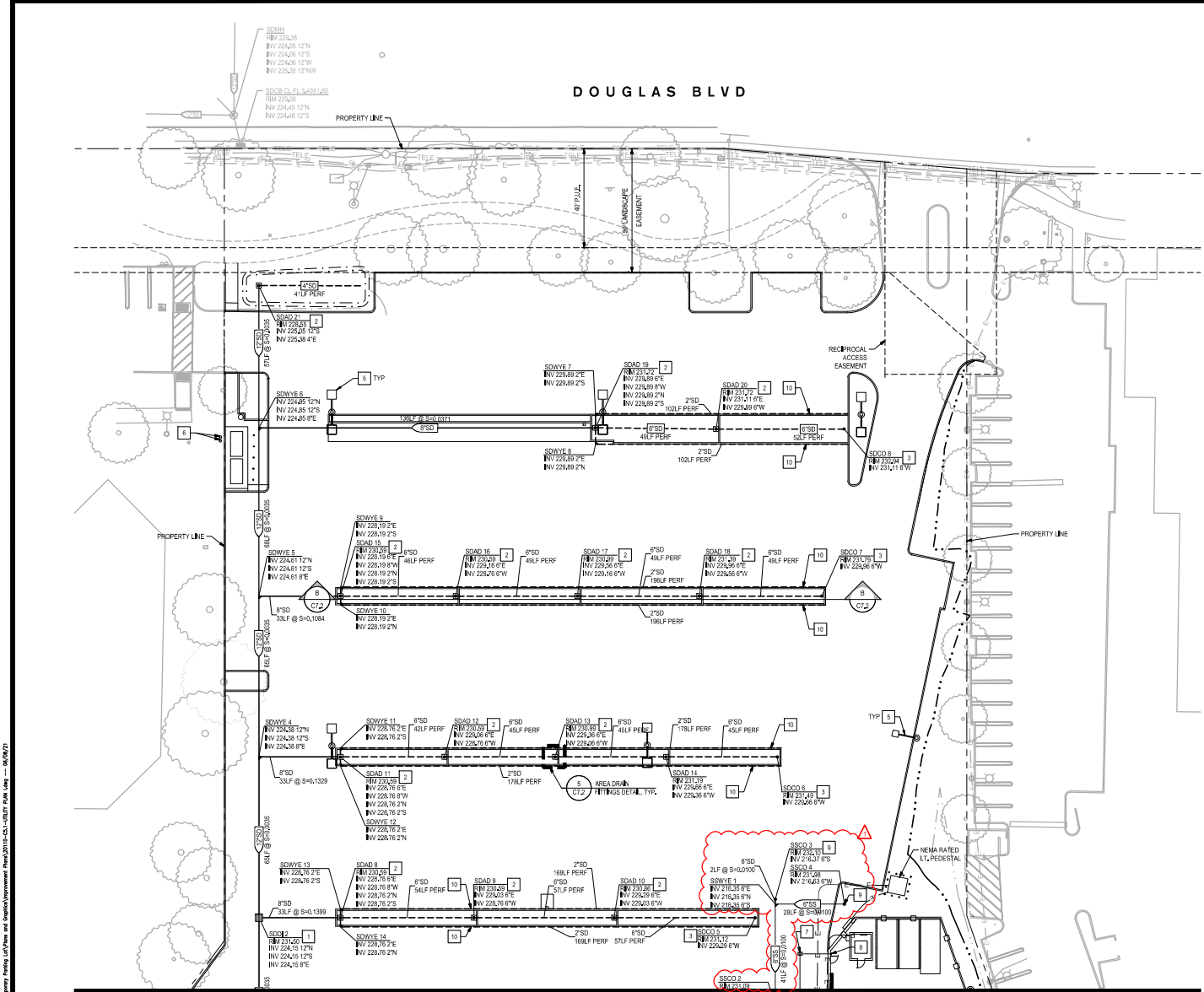
OVERALL UTILITY PLAN

Proj. No. P-8
 Drawn by: RLC
 Date: 5/8/2021
 Job No: 20110
SHEET: C5.0
 OF: 29



- NOTES**
- ALL EXISTING UTILITIES WERE PLOTTED FROM RECORD INFORMATION AND FIELD TOPOGRAPHY. ACTUAL LOCATIONS MAY VARY AND ADDITIONAL CROSSINGS MAY EXIST IN THE FIELD. IT IS IMPERATIVE THAT U.S.A. LOCATING SERVICES LOCATE AND MARK EXISTING UTILITIES PRIOR TO THE START OF EXCAVATION.
 - THE CONTRACTOR SHALL USE EXTREME CAUTION WHEN EXPOSING EXISTING UTILITY CROSSINGS AND SERVICES.
 - ANY DAMAGE TO EXISTING UTILITIES WILL BE THE SOLE RESPONSIBILITY OF THE CONTRACTOR.





- LEGEND**
- PROPOSED DRAIN INLET
 - PROPOSED AREA DRAIN
 - PROPOSED CLEANOUT
 - PROPOSED STORM DRAIN LINE
 - - - PROPOSED PERFORATED STORM DRAIN LINE

- KEY NOTES**
- 1 DRAIN INLET PER DETAIL 2 ON SHEET C7.1.
 - 2 12" AREA DRAIN PER DETAIL 4 ON SHEET C7.1.
 - 3 STORM DRAIN CLEANOUT PER DETAIL 3 ON SHEET C7.1.
 - 4 CONNECT TO EXISTING STORM DRAIN MANHOLE
 - 5 LIGHT POLE, SEE E22
 - 6 RELOCATED IRRIGATION CONTROL VALVE, PIPING AND CONTROL WIRE
 - 7 INSTALL CHASE TO BE TRAFFIC RATED CONCRETE BOX
 - 8 MOUNT A 3/4" HOSE WITH A 1 1/2" X 3/4" REDUCER
 - 9 SANITARY SEWER CLEANOUT PER DETAIL 6 ON SHEET C7.1
 - 10 2" WALL DRAIN PER DETAIL 3 ON SHEET C7.2

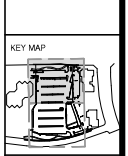
SIEGFRIED
 900 Howe Ave., Suite 200
 Sacramento, CA 95825
 916-450-7777
 www.siegfriedeng.com

- CIVIL
- STRUCTURAL
- LANDSCAPE ARCHITECTURE
- SURVEYING



REVISIONS

No.	Date	Description
1	6/8/2021	PLANNING DEPARTMENT BC #2



PROJECT
 KAISER PERMANENTE ROSEVILLE TEMPORARY PARKING LOT
 3135 DOUGLAS BLVD, ROSEVILLE, CA 95661

CW# TBD
 SD# TBD
 EN# TBD



DATE SIGNED: 06/08/21

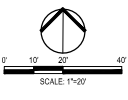
SHEET TITLE

UTILITY PLAN I

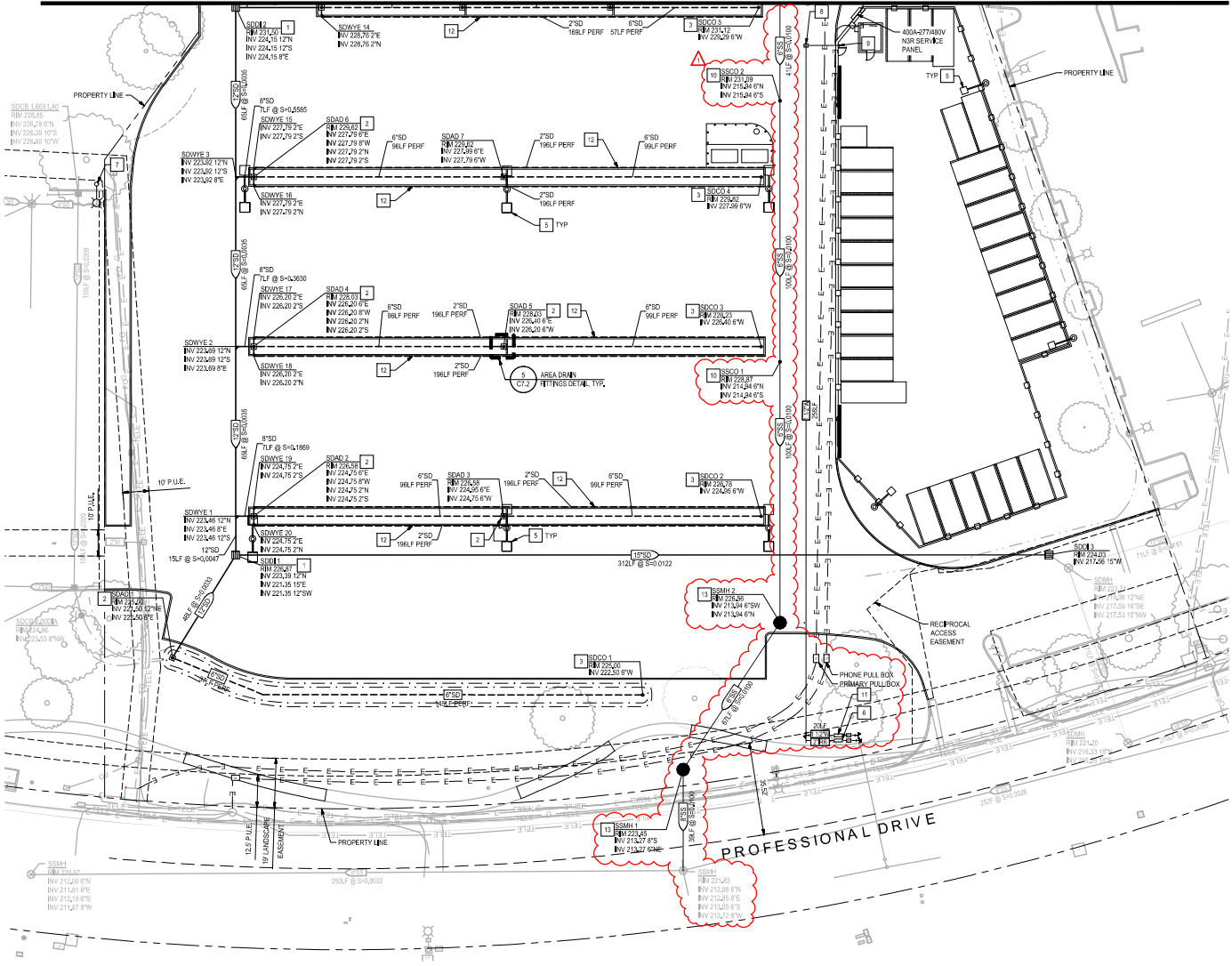
Proj Mgr: PJS
 Drawn by: RRQ
 Date: 6/8/2021
 Job No.: 20110
SHEET: C5.1

Know what's below. Call before you dig.

- NOTES**
1. ALL EXISTING UTILITIES WERE PLOTTED FROM RECORD INFORMATION AND FIELD TOPOGRAPHY. ACTUAL LOCATIONS MAY VARY AND 100% FINAL CROSSINGS MAY DIFFER IN THE FIELD. IT IS THE RESPONSIBILITY OF THE CONTRACTOR TO LOCATE AND MARK EXISTING UTILITIES PRIOR TO THE START OF EXCAVATION.
 2. THE CONTRACTOR SHALL USE EXTREME CAUTION WHEN EXPOSING EXISTING UTILITY CROSSINGS AND SERVICES.
 3. ANY DAMAGE TO EXISTING UTILITIES WILL BE THE SOLE RESPONSIBILITY OF THE CONTRACTOR.



FOR CONTINUATION SEE SHEET C5.1



- LEGEND**
- PROPOSED DRAIN INLET
 - PROPOSED AREA DRAIN
 - PROPOSED STORM DRAIN CLEANOUT
 - PROPOSED STORM DRAIN LINE
 - - - PROPOSED PERFORATED STORM DRAIN LINE

- KEY NOTES**
- 1 DRAIN INLET PER DETAIL 2 ON SHEET C7.1.
 - 2 12" AREA DRAIN PER DETAIL 4 ON SHEET C7.1.
 - 3 STORM DRAIN CLEANOUT PER DETAIL 3 ON SHEET C7.1.
 - 4 CONNECT TO EXISTING STORM DRAIN MANHOLE
 - 5 LIGHT POLE SEE SHEET E3.2
 - 6 2" IRRIGATION SERVICE WITH METER AND BACKFLOW PREVENTER IN A CAGE ENCLOSURE PER CITY OF ROSEVILLE STD. DWG. W47
 - 7 RELOCATED LIGHT POLE
 - 8 INSTALL CHESTY B9 TRAFFIC RATED CONCRETE BOX
 - 9 MOUNT A 3/4" HOSE WITH A 1/2" X 3/4" REDUCER
 - 10 SANITARY SEWER CLEANOUT PER DETAIL 6 ON SHEET C7.1
 - 11 1 1/2" SERVICE WITH METER AND BACKFLOW PREVENTER IN A CAGE ENCLOSURE PER CITY OF ROSEVILLE STD. DWG. W47
 - 12 2" WALL DRAIN PER DETAIL 3 ON SHEET C7.2
 - 13 SANITARY SEWER MANHOLE AND COVER PER DETAIL 8 ON SHEET C7.4

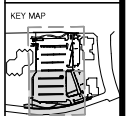


- CIVIL
- STRUCTURAL
- LANDSCAPE ARCHITECTURE
- SURVEYING



REVISIONS

No.	Date	Description
1	6/8/2021	PLANNING DEPARTMENT BC #2



PROJECT
 KAISER PERMANENTE
 ROSEVILLE
 TEMPORARY
 PARKING LOT

2135 DOUGLAS BLVD,
 ROSEVILLE, CA 95661

CW# TBD
 SD# TBD
 EN# TBD



DATE SIGNED: 06/08/21

SHEET TITLE

UTILITY PLAN II

Proj Mgr: PJS
 Drawn by: RRQ
 Date: 6/8/2021
 Job No.: 20110
 SHEET:

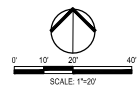
C5.2

OF 29



Know what's below.
 Call before you dig.

- NOTES**
1. ALL EXISTING UTILITIES WERE PLOTTED FROM RECORD INFORMATION AND FIELD TOPOGRAPHY. ACTUAL LOCATIONS MAY VARY AND ADDITIONAL CROSSINGS MAY OCCUR IN THE FIELD. IT IS RECOMMENDED THAT LOCAL AGENCIES LOCATE AND MARK EXISTING UTILITIES PRIOR TO THE START OF EXCAVATION.
 2. THE CONTRACTOR SHALL USE EXTREME CAUTION WHEN EXPOSING EXISTING UTILITY CROSSINGS AND SERVICES.
 3. ANY DAMAGE TO EXISTING UTILITIES WILL BE THE SOLE RESPONSIBILITY OF THE CONTRACTOR.



C:\pwworkspace\20110_Roseville_Kaiser Permanente Parking Lot\Draws and Specifications\Drawings\C5.1-Utility\UTL Plan.dwg - 06/08/21